



# DEFENDER™ 5000

Floor Scales



## *Multifunctional Floor Scale for Standard Industrial Applications*

The OHAUS next generation Defender 5000 Series Floor Scale is a solid lineup of floor and pit mount scales that do not compromise on quality for industrial applications. Powered by four IP68 hermetically sealed load cells that will withstand years of daily usage in industrial environments, these scales offer a unique combination of affordability, versatility and quality that your company can depend on for years and years.

### *Unique Features Include:*

- OHAUS Defender 5000 Series Floor Scale is equipped with new TD52 series indicator with an easy-to-use keypad, large backlit display and plain text on-screen prompts which guide you through operation.
- Four stainless steel IP68 hermetically sealed load cells that are standard on all models.
- Combination floor-pit mount design provides versatility for portable or stationary placement, above or below ground installation.

# DEFENDER™ 5000 Floor Scales

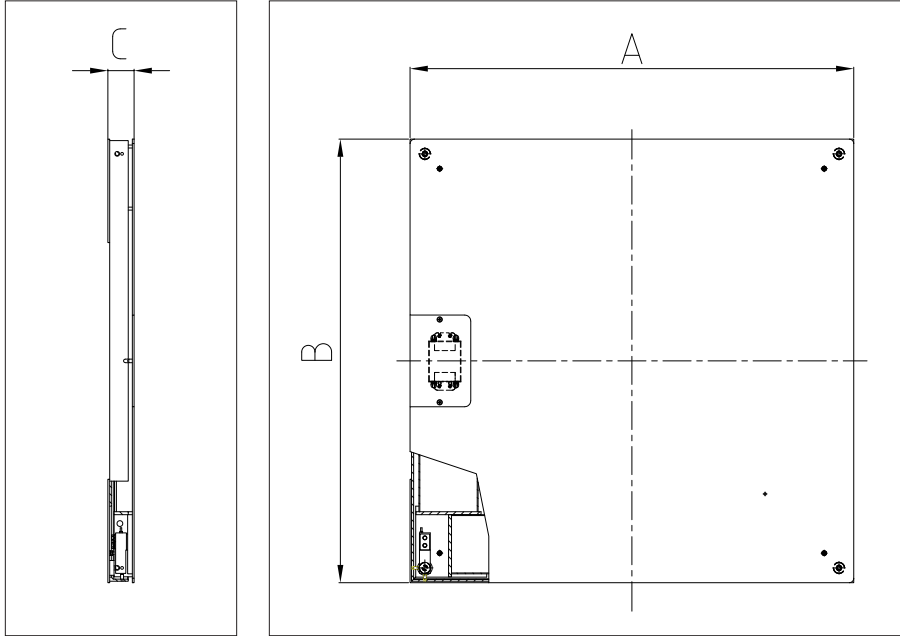
## Specifications

Model	i-DF52P300Q1S	i-DF52P600Q1R	i-DF52P1500Q1L	i-DF52P3000Q1L	i-DF52P1500Q1X	i-DF52P3000Q1X
Capacity × Readability	300 kg x 0.05 kg	600 kg x 0.1 kg	1500 kg x 0.2 kg	3000 kg x 0.5 kg	1500 kg x 0.2 kg	3000 kg x 0.5 kg
Platform Size (A x B x min H)	800 x 800 x 90 mm	1000 x 1000 x 90 mm	1250 x 1250 x 90 mm		1500 x 1500 x 90 mm	
Platform Material	Painted carbon steel, raised treaded surface, fixed top plate 6mm thick					
Indicator	ABS plastic indicator (TD52P)					
Load Cell Model	4 x IP68 stainless steel, shear beam, OIML C3					
Load Cell Capacity Emax	220 kg	550 kg	1100 kg	2200 kg	1100 kg	2200 kg
Load Cell Output Impedance	350 ohm ± 3.5 ohm					
Load Cell Excitation Voltage	5V ~ 15V, DC/AC					
Approx. Net Weight	88 kg	117 kg	159 kg		296 kg	
Weighing Units	kg, g, lb, oz, lb:oz, t, ton, custom					
Modes	Weighing, Parts Counting, Percent Weighing, Check Weighing, Dynamic Weighing (Display Hold), Filling					
Display	Dot matrix LCD with white LED backlight, 256 x 80 pixels					
Interface	Standard RS232, 32 GB MicroSD Card (included) Optional Ethernet, WiFi/Bluetooth, 2 <sup>nd</sup> RS232/RS485/USB, Analog Output, 2 In/4 Out Digital I/O					
Power	100-240 VAC / 50/60 Hz Universal Power Supply, Line Cord Rechargeable Lithium battery (optional)					
Maximum Safe Static Load: with Central Load	900 kg	1500 kg	3000 kg	4500 kg	3000 kg	4500 kg
with Side Load	600 kg	1000 kg	2000 kg	3000 kg	2000 kg	3000 kg
with Corner Load	300 kg	500 kg	1000 kg	1500 kg	1000 kg	1500 kg
Junction Box	IP66, 304 stainless steel, with heavy duty 6 m EasyConnect™ Cable					
Accessories	Ramp, Pit Frame, Column					
Operating Temperature	-10 °C to 40 °C					
Shipping Dimensions (W x D x H)	1040 x 1040 x 289 mm		1290 x 1290 x 294 mm		1540 x 1540 x 296 mm	

Model	i-DF52XW300T1S	i-DF52XW600T1R	i-DF52XW1500T1L	i-DF52XW3000T1L	i-DF52XW1500T1X	i-DF52XW3000T1X
Capacity × Readability	300 kg x 0.05 kg	600 kg x 0.1 kg	1500 kg x 0.2 kg	3000 kg x 0.5 kg	1500 kg x 0.2 kg	3000 kg x 0.5 kg
Platform Size (A x B x min H)	800 x 800 x 90 mm	1000 x 1000 x 90 mm	1250 x 1250 x 90 mm		1500 x 1500 x 90 mm	
Platform Material	304-grade stainless steel bead blasted flat surface, fixed top plate 6mm thick					
Indicator	304-grade IP68 stainless steel indicator (TD52XW)					
Load Cell Model	4 x IP68 stainless steel, shear beam, OIML C3					
Load Cell Capacity Emax	220 kg	550 kg	1100 kg	2200 kg	1100 kg	2200 kg
Load Cell Output Impedance	350 ohm ± 3.5 ohm					
Load Cell Excitation Voltage	5V ~ 15V, DC/AC					
Approx. Net Weight	88 kg	117 kg	159 kg		296 kg	
Weighing Units	kg, g, lb, oz, lb:oz, t, ton, custom					
Modes	Weighing, Parts Counting, Percent Weighing, Check Weighing, Dynamic Weighing (Display Hold), Filling					
Display	Dot matrix LCD with white LED backlight, 256 x 80 pixels					
Interface	Standard RS232, 32 GB MicroSD Card (included) Optional Ethernet, WiFi/Bluetooth, 2 <sup>nd</sup> RS232/RS485/USB, Analog Output, 2 In/4 Out Digital I/O					
Power	100-240 VAC / 50/60 Hz Universal Power Supply, Hardwired Rechargeable Lithium battery (optional)					
Maximum Safe Static Load: with Central Load	900 kg	1500 kg	3000 kg	4500 kg	3000 kg	4500 kg
with Side Load	600 kg	1000 kg	2000 kg	3000 kg	2000 kg	3000 kg
with Corner Load	300 kg	500 kg	1000 kg	1500 kg	1000 kg	1500 kg
Junction Box	IP66, 304 stainless steel, with heavy duty 6 m EasyConnect™ Cable					
Accessories	Ramp, Pit Frame, Column					
Operating Temperature	-10 °C to 40 °C					
Shipping Dimensions (W x D x H)	1040 x 1040 x 289 mm		1290 x 1290 x 294 mm		1540 x 1540 x 296 mm	

# DEFENDER™ 5000 Floor Scales

## Dimensions



	i-DF300Q1S/T1S	i-DF600Q1R/T1R
A	800 mm	1000 mm
B	800 mm	1000 mm
C	90 mm	90 mm

	i-DFxxxQ1L/T1L	i-DFxxxQ1X/T1X
A	1250 mm	1500 mm
B	1250 mm	1500 mm
C	90 mm	90 mm

## Other Standard Features and Equipment

Two carbon steel eye bolts, side access IP66 stainless steel Junction box, four load cell mounted feet with self-swiveling ball-in-cup design, painted and stainless steel floor stands (available as accessories)

## Compliance

- **Metrology:** EN45501 (Indicator: T11213); OIML R60 certified load cells
- **Product Safety:** IEC/EN 61010-1
- **Electromagnetic Compatibility:** IEC/EN 61326-1 Class B, basic environments
- **Ingress Protection:** IEC 60529 – IP68 (for TD52XW indicator), IEC 60529 – IP68 (for Load Cell), IEC 60529 – IP66 (for Junction Box)
- **Compliance Marks:** CE, RCM
- **Other:** WEEE, RoHS

## Accessories

Ramp 800mm DF-Q1 CS .....	30724867	Pit Frame 1000x1000 Q1 CS .....	30803588
Ramp 1000mm DF-Q1 CS .....	30572944	Pit Frame 1250x1250 Q1 CS .....	30803589
Ramp 1250mm DF-Q1 CS .....	30572945	Pit Frame 1500x1500 Q1 CS .....	30803591
Ramp 1500mm DF-Q1 CS .....	30572946	Pit Frame 800x800 T1 SS .....	30803593
Ramp 800mm DF-T1 SS .....	30724878	Pit Frame 1000x1000 T1 SS .....	30803594
Ramp 1000mm DF-T1 SS .....	30724879	Pit Frame 1250x1250 T1 SS .....	30803595
Ramp 1250mm DF-T1 SS .....	30724880	Pit Frame 1500x1500 T1 SS .....	30803597
Ramp 1500mm DF-T1 SS .....	30724881	Floor column kit, painted carbon steel .....	30531244
Pit Frame 800x800 Q1 CS .....	30803567	Floor column kit, stainless steel .....	30539553

80776916\_A\_20240415 © Copyright OHAUS Corporation

### OHAUS CORPORATION

Tel: 800.672.7722  
973.377.9000  
Fax: 973.944.7177

[www.ohaus.com](http://www.ohaus.com)

*The management system governing the manufacture of this product is ISO 9001:2015 certified.*

